

Innova ABS + SRS Upgrade Instructions

INTRODUCTION

These instructions provide the procedures for upgrading the firmware for your Innova OBD Tool through the Internet.

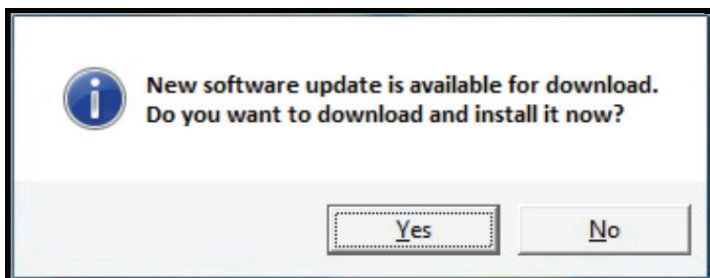
MINIMUM SYSTEM REQUIREMENTS

- Windows® PC System
- Windows XP, Windows Vista or Windows 7
- 50 MB of free hard disk space
- 128 MB RAM
- 1 USB Port
- Internet Connection

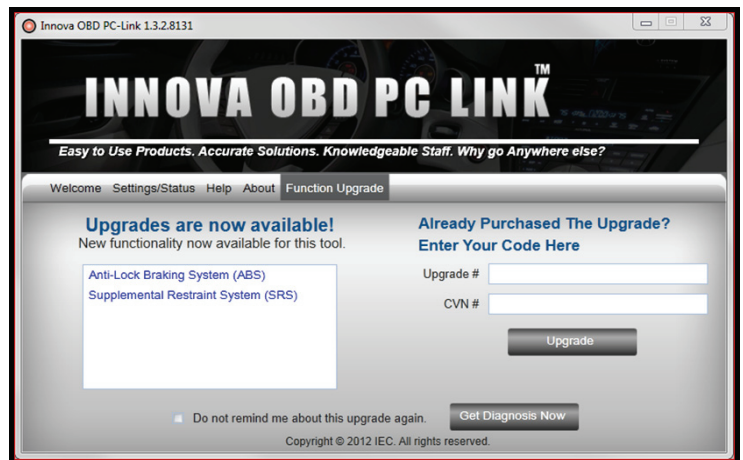
UPGRADE INSTRUCTIONS

1. Establish a connection to the Internet.
2. Launch the Innova PC-Link software on your computer.
3. Connect one end of the PC-Link USB cable to the Innova OBD Tool. Connect the other end of the cable to an available USB port on your computer.

NOTE: The latest version of Innova PC-Link *must* be installed on your computer in order to perform the firmware upgrade. If you *do not* have the latest version of the PC-Link software installed, an advisory dialog displays. Click the **Yes** button to install the latest version of Innova PC-Link.



4. Once the latest version of Innova PC-Link is installed, disconnect and then reconnect the OBD Tool to your computer.
5. Once the application has detected that you have the latest version of Innova PC-Link installed on your computer, the application will notify you of any available upgrades for your specific OBD Tool and will provide a screen to enter your upgrade code.



6. Enter your upgrade and CVN numbers and click the **Upgrade** button.
7. The upgrade is now complete. You can now disconnect your OBD Tool and enjoy your newly acquired upgrade.